



19 Furze Drive | £475,000
Romsey, Hampshire, SO51 0BJ

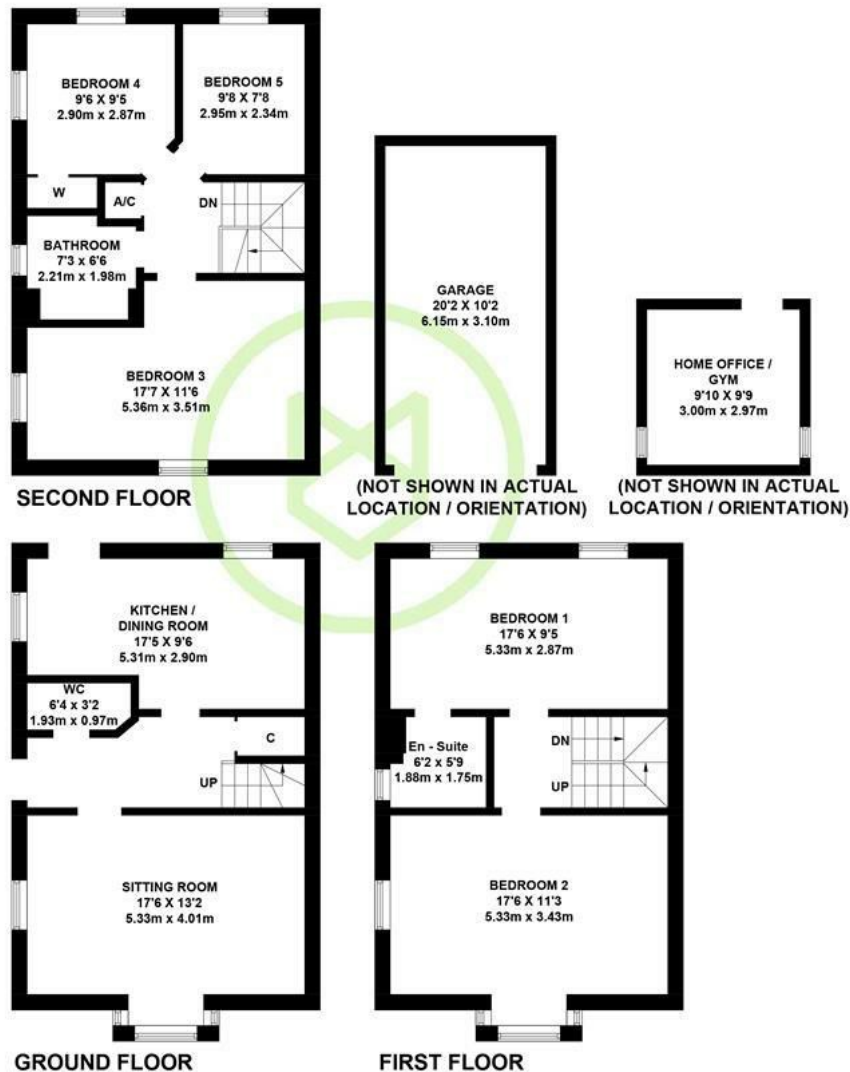
 Henshaw Fox



19 Furze Drive
Romsey, Hampshire, SO51 0BJ

01794 521339 / 02382 541100
homes@henshawfox.co.uk
www.henshawfox.co.uk





APPROXIMATE GROSS INTERNAL AREA
 GROUND FLOOR = 493 SQ FT / 45.8 SQ M
 FIRST FLOOR = 493 SQ FT / 45.8 SQ M
 SECOND FLOOR = 483 SQ FT / 44.9 SQ M
 OUTBUILDINGS = 300 SQ FT / 27.9 SQ M
 TOTAL = 1769 SQ FT / 164.4 SQ M

Illustration for identification purposes only,
 measurements are approximate, not to scale. (ID1034016)

Summary

Built in 2016, this spacious end of terrace home is arranged over three floors and is situated within the desirable Abbotswood development. The home features five bedrooms, en-suite to principal room, family bathroom, open plan kitchen/dining room, large sitting room and useful downstairs cloakroom. Outside, the home boasts a south facing rear garden with home office and garage with allocated parking in front.

Summary

- End of terrace home set over three floors
- Flexible layout with five bedrooms
- Family bathroom, en-suite shower room and downstairs cloakroom
- Kitchen/dining room overlooking rear garden
- Garage with allocated parking in front
- South facing rear garden

EPC Rating

Energy Efficiency Rating
 Current B
 Potential A

19 Furze Drive

Romsey, Hampshire, SO51 0BJ

Ground Floor

Upon entry, the entrance hall provides access for the kitchen/dining room, sitting room, useful cloakroom comprising WC and wash basin, under stairs storage cupboard and stairs leading to the first floor landing. Located at the rear of the home, the modern kitchen/dining room has space for dining table and chairs, selection of storage units, space for fridge/freezer and built in appliances including washing machine, dishwasher, oven, hob and extractor above. Double doors then lead out to the adjoining patio area in the rear garden. Overlooking the green to the front, the sitting room has ample space for seating furniture and large bay window bringing in lots of natural light.

First Floor

The first floor landing allows access for the principal bedroom, bedroom two and stairs to the second floor. The principal bedroom is a large double with en-suite comprising shower cubicle, WC, wash basin and heated towel rail. Currently set up as a family room, bedroom two is also a spacious double with dual aspect windows.

Second Floor

The second floor landing provides access for three bedrooms, family bathroom and airing cupboard. Overlooking the front, bedroom three is a large double with dual aspect windows. Bedroom four is an ample single with built in wardrobe. Bedroom five is also an ample single room. The family bathroom comprises bath, WC, wash basin and heated towel rail.

Outside

Accessed via double doors from the kitchen, the south facing rear garden is mainly laid to lawn with spacious patio area and outbuilding currently used as a home office. Path then leads to gate providing access out to Furze Drive.

Parking

The home comes with a garage and parking for one vehicle in front. Further on street parking is available.

Location

Furze Drive is located a short drive from the shops, restaurants and cafes of Romsey Town Centre. All main transport rail and road links are close at hand and there is a well-stocked convenience store, a café, takeaways and a nursery all within very close walking distance on the Abbotswood estate. The property itself overlooks a green and is very close to the picturesque Abbotswood Nature Reserve.

Tenure

Freehold

Terms & Conditions

These particulars are set out as a general outline and do not constitute any part of an offer or contract. We have not tested any services, appliances or equipment and no warranty is given or implied that these are in working order. Fixtures, fittings and furnishings are not included unless specifically described. All measurements, floor plans, distances and areas are approximate, are for guidance only and should not be relied on for carpets or furnishings. It should not be assumed that the property remains the same as shown in the photographs.

Age

Built in 2016

Heating

Gas central heating

Sellers Position

Looking for onward purchase

Infant and Junior School

Cupernham Infant and Junior School

Secondary School

The Romsey Academy

Council Tax

Test Valley - Band F

Terms and Conditions

These particulars are set out as a general outline and do not constitute any part of an offer or contract. We have not tested any services, appliances or equipment and no warranty is given or implied that these are in working order. Fixtures, fittings and furnishings are included unless specifically described. All measurements, floor plans, distances and areas are approximate and for guidance only. It should not be assumed that the property remains the same as shown in the photographs.

01794 521339 / 02382 541100

homes@henshawfox.co.uk

www.henshawfox.co.uk

